



HAZTEC[®]
SMART WORKWEAR

INTRODUCING
SMART GARMENT TECHNOLOGY
FOR THE **CONNECTED WORKER**

POWERED BY:

eLeksen
embedded



DESIGNED FOR **ATEX ENVIRONMENTS**

PETROCHEMICAL, OFFSHORE, UTILITY, RENEWABLE INDUSTRIES

SMART WORKWEAR

WEARABLE HEALTH AND SAFETY TECHNOLOGY DESIGNED FOR ATEX ENVIRONMENTS

In a time of increasing health and safety requirements and advancing technology, the new HAZTEC® Smart Workwear solution is the perfect solution to optimise your productivity and safety of your Team.

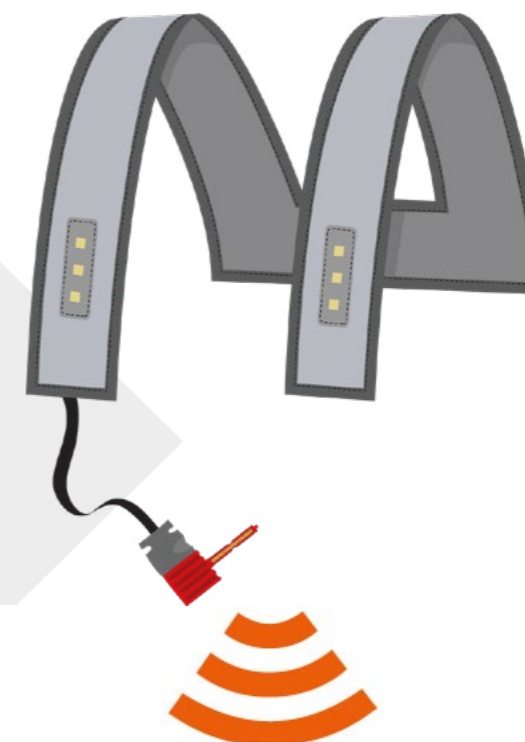
Using the experience of HAZTEC® Technical Workwear manufacturing and ELEKSEN Connected Worker software, we bring to you this new range of products.









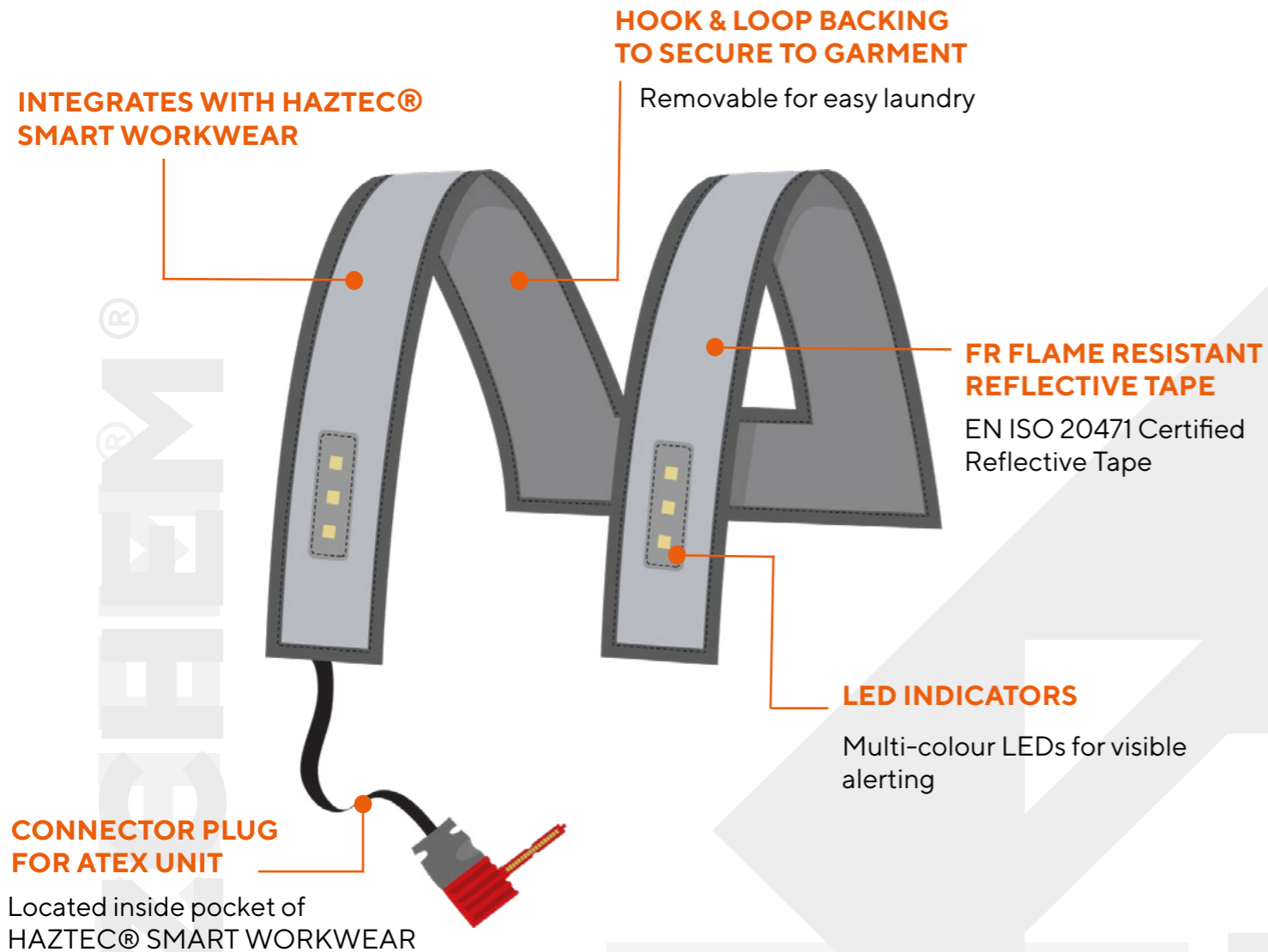
TURN YOUR TECHNICAL WORKWEAR INTO A WEARABLE ALERT SYSTEM

Integrate ATEX Units, with noise dosimetry, vibration monitoring and location capabilities together with vehicle proximity warning, social distancing, for broad and instant data compilation of working situations, allowing for more prompt and appropriate Health and Safety decisions.

Chest and back placed LED Indicators allow quick and clear alert acknowledgment by the wearer and those nearby. These unmistakable green, amber and red flashing LED alerts and audible signals transform FR AS Hi-Vis Technical Garments into an advanced Health and Safety solution for a host of potential hazards, specifically in ATEX environments, Offshore, Storage and Onshore industries.



 POSTURE	 GAS SENSOR	 GPS/GSM	 NOISE SENSOR
 ALERT	 VIBRATION	 PROXIMITY WARNING SYSTEM	 PHYSIOLOGICAL



AC0000
HAZTEC® SMART LOOM

Features: Composed of flame resistant reflective tape, a hook and loop backing to secure to compatible garments, and LED indicators on the chest area for maximum visibility to the wearer. Completely removable to add to your favourite compatible garment, and for washin. Eleksen technology pairs to sensor devices from leading device manufacturers.

Sizes: One Size



INDUSTRIES WHO CAN BENEFIT

RAIL

Combine the HAZTEC® Smart Loom with compatible **RIS 3279-TOM Certified** Garments for an advanced Health & Safety solution

FUEL & GAS

HAZTEC® Smart Workwear meets the stringent standards specified by major fuel oil terminals for wearing while fuelling and loading tankers.

OFFSHORE

Garments in the HAZTEC® Smart Workwear range have been constructed as a result of many years of experience in the Oil and Gas industry.

CONSTRUCTION

Improved Visibility combined with industry Device compatibility makes HAZTEC® Smart Workwear the all-in-one Safety Garment.

CIVIL ENGINEERING

Whatever the Industry, benefit from HAZTEC® Smart Workwear's ability to adapt to your existing operations.



HOW CAN SMART WORKWEAR BENEFIT YOUR OPERATIONS?

ADAPTABLE AND SCALABLE WITHIN YOUR EXISTING OPERATIONS

Tailor Smart Workwear Data capture in-line with your Business needs by selecting the Technologies your day-to-day operations need.

COMPLETE DATA SET FROM MULTIPLE DEVICES

View all Smart Workwear Data on a comprehensive Platform, designed to be used by you!

IMPROVED VISIBILITY

The HAZTEC® Smart Loom features front and back LED's as well as Hi-Vis Reflective Tape for Improved Visibility.

INCREASED SAFETY FOR THE WEARER

Wearers have an Increased level of Protection against Occupational Hazards via Real-time Data that can be analysed to assess Risks.

DRIVES SAFER BEHAVIOUR

Wearers simply fix the HAZTEC® Smart Loom to compatible Garments, no need to fuss with multiple Devices.

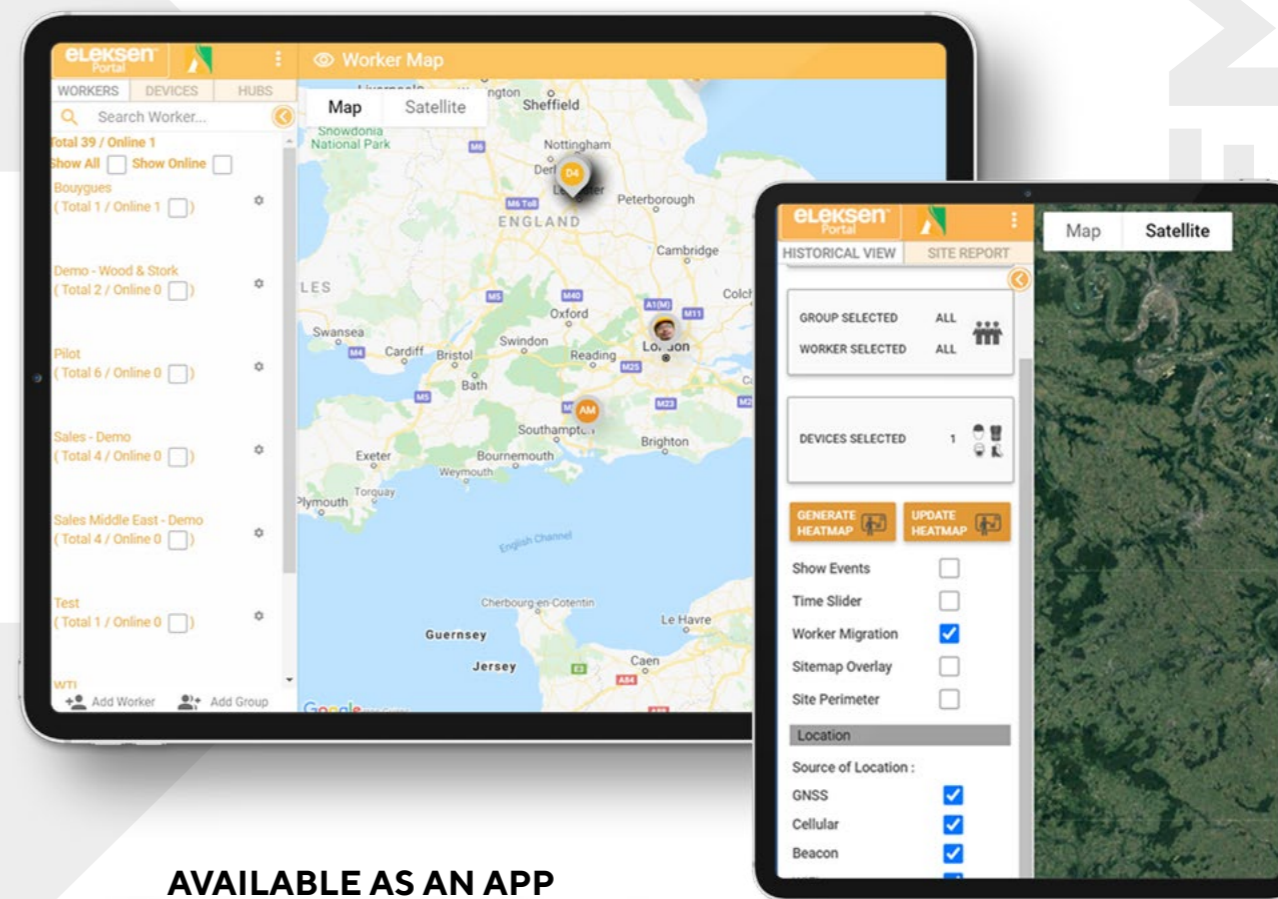
INCREASED EMPLOYEE PRODUCTIVITY & EFFICIENCY

HR Departments can use Smart Workwear Data to identify workflow issues such as short staffing, enabling you to adjust operations accordingly.

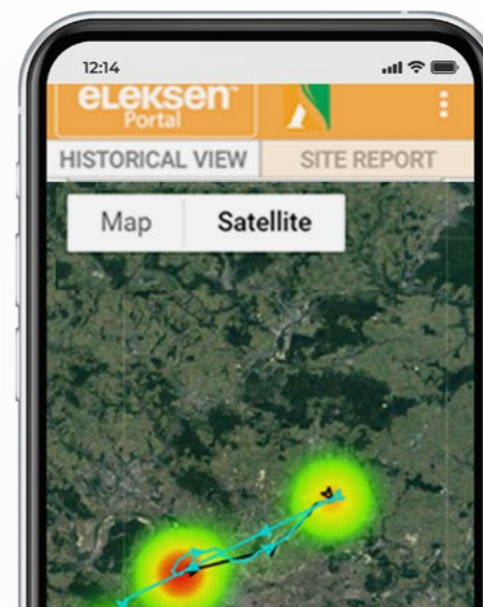
ACCESS NUMEROUS DATA TYPES ALL IN ONE PLACE

Tailor the data your Smart Workwear collects to maximise and optimize workflow and productivity, in relation to your business/industry. This Technology can be used by various departments within your business to identify safety, staffing or changing project demands, via location, movement, behavioural and demographic data.

Health and Safety departments can readily access health and safety information such as incidents and risks identified, whilst Human Resources can keep track more efficiently of staff on-site and identify gaps in workflow due to staff shortages. The scope of potential uses are broad and we are here to help you make the most of this pioneering technology.



AVAILABLE AS AN APP



COMPATIBLE DEVICES

Combine Multiple Devices and Technology into one Easy-to-deploy Attachment.



THE NEXT STEPS

To ensure you get the most out of your HAZTEC® Smart Workwear, we are with you every step of the way from your enquiry right through to the deployment.

Your HAZTEC® Smart Technology Journey starts here:

1. MAKE YOUR ENQUIRY

Interested in the HAZTEC® Smart Workwear range of products? Get in touch to engage with our Connected Worker experts.

2. WEARER ASSESSMENT

One of our product experts will assess your requirements via an online meeting. We'll need to understand how many wearers you are interested to equip with HAZTEC® Smart Workwear, your location, working patterns, current systems and other key data.

3. PRODUCT TRIAL

Once we have established the key data for your organization, we can work towards a product trial to see how HAZTEC® Smart Workwear will work for you.

4. QUOTATION

Following the Product Trial we will propose a solution for your Organisation and quotation for your perusal.

5. PRODUCTION

Once you have approved our Quotation and we have worked through the detail to ensure HAZTEC® Smart Workwear works perfectly for you, we can move the project into production. Whilst some garments are held in stock, larger deployments will be produced for your organization. With manufacturing in the UK and Europe, you can however be assured of short lead times.

6. DEPLOYMENT

Once your HAZTEC® Smart Workwear is ready to roll out, we will work with you to ensure a smooth deployment. You can then watch productivity and safety targets climb.





FUEL & GAS

Those working in the Oil & Gas Industries are faced with the Risk of vehicle collisions, incidents involving machinery, fire, explosions or falls.

Dangerous working environments call for smart solutions to the long list of potential hazards to those working within them. Smart Workwear provides extra support in the way of Real-time Data for Rapid Response in the event of an Incident or Dangerous Occurrence.

INHERENT TWO-TONE FR AS ARC COVERALL

Premium FR AS Workwear from HAZTEC featuring Inherent fabric and distinct and noticeable Yellow/Silver reflective tape. This workwear meets the stringent standards specified by major fuel oil terminals for wearing while fuelling and loading tankers.



AS7200 HAZTEC® PANYU SMART FR AS ARC TWO-TONE HI-VIS COVERALL

Features: Panyu HAZTEC® Smart Compatible Smart coverall in two tone design in Protal® /Cotton/Antistatic Inherent fabric, 285gms fabric. Featuring Industrial Wash FR Reflective Tape, Aramid FR threads and triple-stitched sides seams for longevity and a premium level of Flame Resistance.

'No-Spark Military grade No.5 plastic FR zippers and plastic poppers on pocket flaps protect the wearer in ATEX environments. HAZTEC® EN Icon on the arm for easy EN Norm identification.

The Panyu Smart Coverall has plenty of space for personal items including side access pockets, rear pockets with flaps and combat pockets on the legs, featuring a handy smaller pen pocket.

Designed for maximum comfort as well as maximum protection, this full length technical garment incorporates a twisted leg design, internal kneepad pocket and integral elasticated waist design for wearer comfort.

Fabric: W285 285gms FR AS Inherent Modacrylic fabric.
Certification: EN ISO 11612 A1, B1, C1, EN 1149, EN ISO 20471 Class 3, IEC 61482, ATPV 9,3 cal/cm², ELIM 8,9 cal/cm², EN 13034 (Fabric only).

Sizes: S-6XL Regular Leg, S-4XL Tall Leg
Colour: Navy/HV Yellow, Navy/HV Orange



AS8001 HAZTEC® HEIDRUN SAFE & GREEN ECO BLEND



OFFSHORE

Workers within the Offshore Industry are faced with Hazards such as noise, vibration, harmful substances, accidents when manual handling or falls.

Health and Safety and the ability to Respond to Hazards is paramount in the Offshore Industry, where Resources are required to be Efficient. Smart Workwear takes the hard work out of Safety Data Collection and Mitigates Risks.

TREATED FR AS COVERALL

ORKA has produced the ultimate flame retardant & antistatic offshore Coverall. Designed and constructed as a result of many years of experience in the Oil and Gas industry, the Magnus boasts a wide range of features to protect frontline workers from some of the most hazardous environments. Paired with the HAZTEC® Loom, the Orka Smart Magnus Coverall, becomes a real-time visible and audible SOS status update for potential hazards such as dangerous gas detection.

AS8999

ORKA MAGNUS SMART II FR AS OFFSHORE COVERALL

Features: HAZTEC® Smart compatible, ultimate Flame Retardant & Antistatic Offshore Coverall with Triple Stitched Seams, FR AS 350 gsm fabric, in a choice of 4 colours, offered in 2 chest size increments.

The Magnus Smart Coverall is as comfortable as it is innovative, constructed with a Soft fabric with low shrinkage and excellent fit with elasticated waistband. Designed to withstand Industrial washing with EN ISO 11612, this coverall is made to last.

Nordic design flame retardant tape, triple stitched side seams, 2 x Chest pockets with zippers, action back, relaxed collar design, Internal kneepad pockets, radio loops on front chest and Industrial burstable safety zip, protect the wearer from hazardous environments, injury and spillages.

Fabric: FR AS 99% Cotton/1% Antistatic, 350gms
Certification: EN ISO 11612: 2015 A1, A2, B1, C1, F1
 EN ISO 11611: 2015 Class 1, A1 (Orange, Navy, Royal Blue only)

Sizes: 36"-58" Chest, 33"/85cm Leg
Colour: Navy, Orange, Red, Royal Blue





RAIL INDUSTRIES

Those working in the Rail sector are vulnerable to numerous Hazards, such as collisions, electric shock, challenging working conditions like extreme cold, wind and rain, and often work outside of regular working hours.

Smart Workwear can provide peace of mind for wearers and supervisors, that a high level of safety is being achieved, and that in the event of a dangerous incident, injury or occurrence, responses can be more rapid, thanks to accurate data collection, such as GPS.

INHERENT RAIL SPECIFICATION COVERALL

FR AS Rail Industry workwear constructed from a tough Inherent 290 gsm Protal®/ Cotton/ Polyester/Antistatic blend fabric. Certified for Class 3 Hi- Visibility protection in accordance with the latest Rail Specification RIS-3279-TOM. Featuring the latest development of Hi-Vis fabric offering extended life cycle for the reflective properties of the fabric and multiple wash cycles.



AS1002 HAZTEC® MIMAS SMART FR AS ARC RIS COVERALL

Features: Haztec SmartCompatible coverall constructed with the latest RIS-PLUS™ Blend for extended wash life cycle and protection.

Featuring double stitched 5cm Reflective Tape, EN Icon on the arm for easy identification of EN Norms, sleeve pocket, 'No-Spark' Military-grade No5 plastic FR zippers & poppers and Aramid FR Threads, this coverall protects the wearer in ATEX environments whilst maintaining a high level of visibility.

Bring everything you need with side access pockets and rear pockets with flaps, a combat pocket on each leg, one with a small phone pocket and two chest radio loops.

The Mimas Smart Coverall is the same comfortable fit, with twisted leg design to reduce restriction of movements, adjustable wrist tabs to keep out the cold and a mandarin collar for maximum neck-to-ankle protection.

Fabric: 290 gsm Protal®/Cotton/Polyester/Antistatic.
Certification: EN ISO 11612 A1, B1, C1, IEC 61482-2 Class 1 (Box Test), 8cal/cm2 (ATPV), ELIM 7,5 cal/cm2, EN ISO 20471 Class 3, RIS-3279-TOM, EN 1149, EN 13034 (Fabric only).

Sizes: S-6XL Regular Leg, S-2XL Tall Leg

Colour: RIS HV Orange





FR AS OUTER JACKET WITH LINER

This best selling traffic jacket favoured for its extra warmth, now integrates seamlessly with HAZTEC® wearable health and safety technology, using a durable and secure hook and loop fastening system, to ensure the Smart Loom remains a part of your Haztec Smart Garment as long as you want it to be. Simply remove the Loom to wash your Boulton and re-attach when dry.



AS9464 HAZTEC® BOULTON FR AS HI-VIS WATERPROOF TRAFFIC JACKET

Features: The brand new HAZTEC® Smart compatible traffic jacket is constructed with 100% Waterproof, windproof and highly breathable fabric, featuring waterproof taped seams, adjustable foldaway hood and front handwarmer pockets for extra protection against the elements.

This garment earns its 'Best Seller' status with High tear resistance fabric, meaning your Boulton stands the test of time. The fixed flame retardant cotton lining is paired with a highly breathable coating which attracts moisture for a high level of comfort.

Wear the Boulton your way with detachable treated FR fabric liner, straight collar fastenings, sleeve narrowing press studs and elastic drawstrings on the hem, all designed to tailor the perfect fit. Stow away everything you need using the ID chest pocket, internal and external napoleon pockets. All garments feature a HAZTEC arm Icon featuring EN standards.

Fabric: WP1000 Waterproof FR AS Polyester.
Certification: EN 14116, EN 1149, EN ISO 20471 Class 3, EN ISO 343 Class 3/2.

Sizes: S-5XL
Colour: HV Orange/Navy, HV Yellow/Navy





INHERENT RAIL SPECIFICATION SOFTSHELL JACKET

The HAZTEC® Smart-Loom compatible softshell jacket is designed for the Rail, Petrochemical and Gas Companies, and is certified to multiple EN Norms including RIS-3279-TOM the Railway Group Standard for Hi-Visibility clothing. The FR AS softshell jacket provides a smart alternative to the traditional fleece, with added Class 3 Hi-Visibility, double stitched reflective tape for durability, with a brushed fleeced interior for comfort.



AS0059 HAZTEC COSSACK SMART FR AS HI-VIS SOFTSHELL JACKET

Features: This HAZTEC® Smart compatible Smart jacket is constructed with a softshell outer HI-Vis fabric with brushed fleece reverse for the perfect combination of Class 3 Hi-Vis protection and wearer comfort.

EN ISO 20471 Class 3 and RIS-3279-TOM certified for use in the rail industry, the Cossack Smart jacket features Military grade No5 plastic FR zipper and plastic 'No-Spark' Poppers on the adjustable cuffs. Maximum protection is achieved with a mandarin collar, extended tail and double stitched reflective tape.

Get the job done with radio loops on both chests and phone/pen left sleeve pocket as well as chest and side access pockets with zippers, with clear chest area to add company logos. HAZTEC® EN Icon on the arm for easy identification of EN Norms

Fabric: Modacrylic Plus+ Softshell 380gms (Genuine Protal)
Certifications: EN ISO 11612 A1, B1, C1, F1, EN 1149, EN ISO 20471 Class 3, RIS-3279-TOM

Sizes: S-6XL

Colour: RIS HV Orange



DESIGNED FOR **ATEX ENVIRONMENTS**

PETROCHEMICAL, OFFSHORE, UTILITY, RENEWABLE INDUSTRIES



HAZTEC®
SMART WORKWEAR

AVAILABLE FROM:

HAZCHEM® Safety

www.haztecworkwear.com

OFFICES IN:

Brackley, Hull, Aberdeen,
Middlesbrough & Ireland

BRACKLEY, UK

Beta House

Borough Road

Brackley

Northamptonshire

NN13 7BE

ABERDEEN, UK

Orka House

Howe Moss Drive

Kirkhill Industrial Estate

Dyce, Aberdeen

AB21 0GL

POWERED BY:

eLeksen
embedded

Tel: +44 (0)1280 841400

sales@hazchemsafety.com

V1.0