

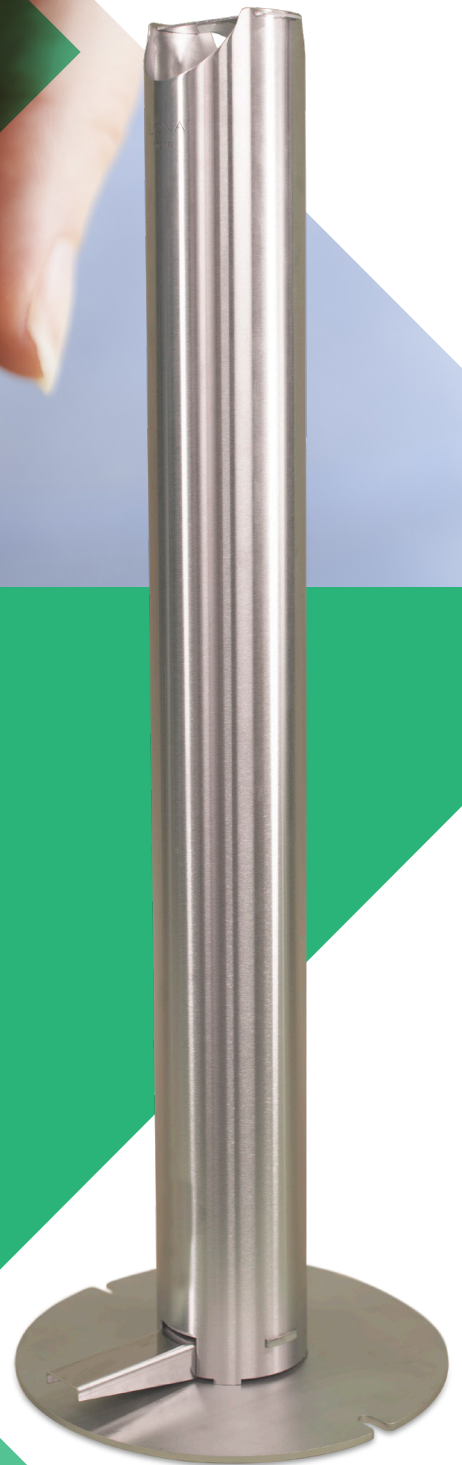


PEDAL ACTIVATED HAND SANITISER



## Free-standing pedal activated hand sanitiser station

- ▶ No contact with hands
- ▶ Adapts to all bottles
- ▶ 100% mechanical
- ▶ No installation required
- ▶ Durable and robust





## Ensure increased hygiene and safety with ilona free-standing pedal activated hand sanitiser station

### PROUDLY MADE IN UK

This stainless steel dispenser is fully mechanical, with a pedal mechanism that avoids hands making contact with the sanitiser bottle.

ilona doesn't need any permanent installation but can be fixed to the ground. It's very stable with a large foot plate and is vandal proof.

It is compatible with any standard sanitiser bottle, allowing it to be used in many applications.

### TECHNICAL CHARACTERISTICS

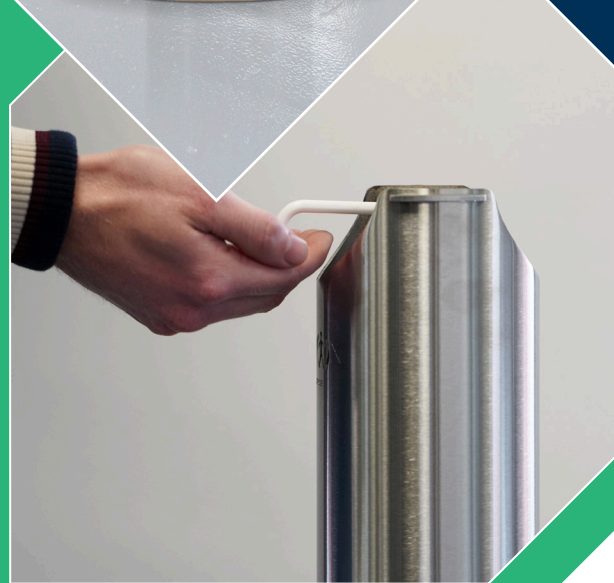
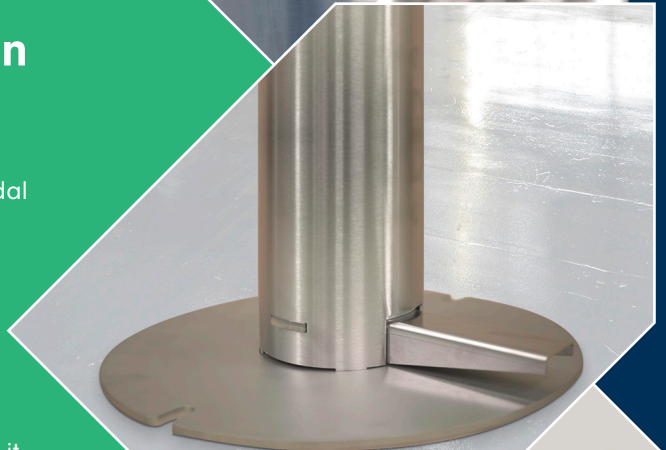
Grade 304 brushed stainless steel

Height: 1,000 mm

Diameter: 114mm

Foot diameter: 330mm

Adaptable to any bottle with a push-in top  
Diameter max: 110mm – Height max: 300mm



For illustration only – exact model may vary